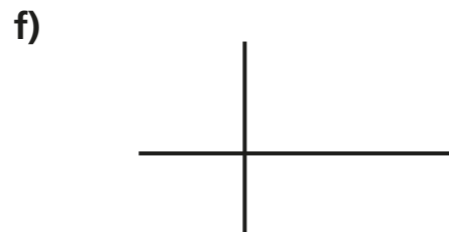
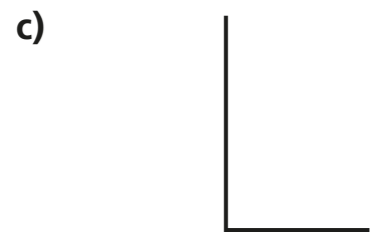
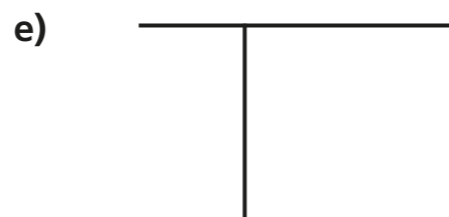
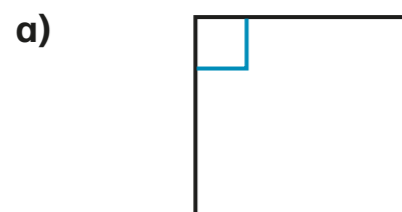


Right angles in shapes

1 There is at least one right angle in each picture.
Mark the right angles on the pictures.
The first one has been done for you.

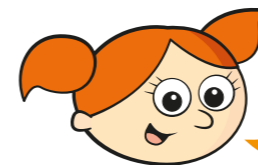


Compare answers with a partner.

2 A rectangle has four right angles.
Mark the right angles on the rectangle.

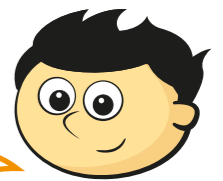


3 Alex and Jack are identifying right angles.



Alex

Both of the angles are right angles.



Jack

I disagree. The first one is a right angle but the second one is a left angle because it is on the left of the line.

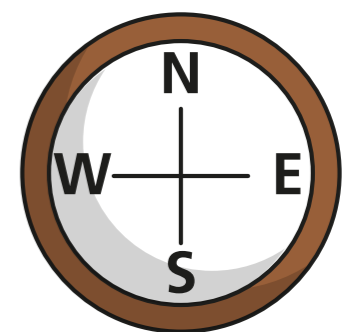
Who do you agree with? _____

Talk about it with a partner.

4 Dexter is facing north.
He turns a quarter turn.



This is the same as one right angle.



Do you agree with Dexter? _____

Talk about it with a partner.

5 Complete the sentences.

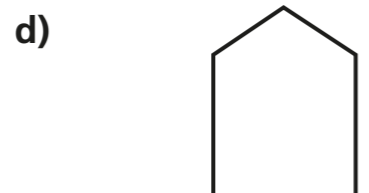
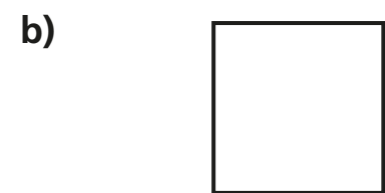
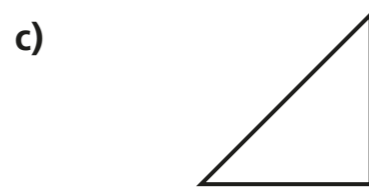
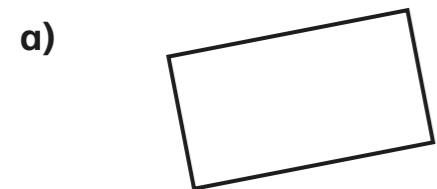
A quarter turn is equal to right angle.

A half turn is equal to right angles.

A three-quarter turn is equal to right angles.

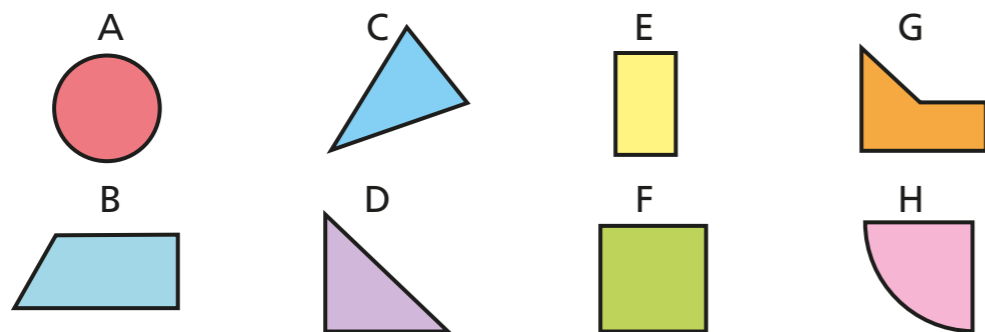
A full turn is equal to right angles.

6 Draw the right angles on each shape.



7 Look at the number of right angles in each shape.

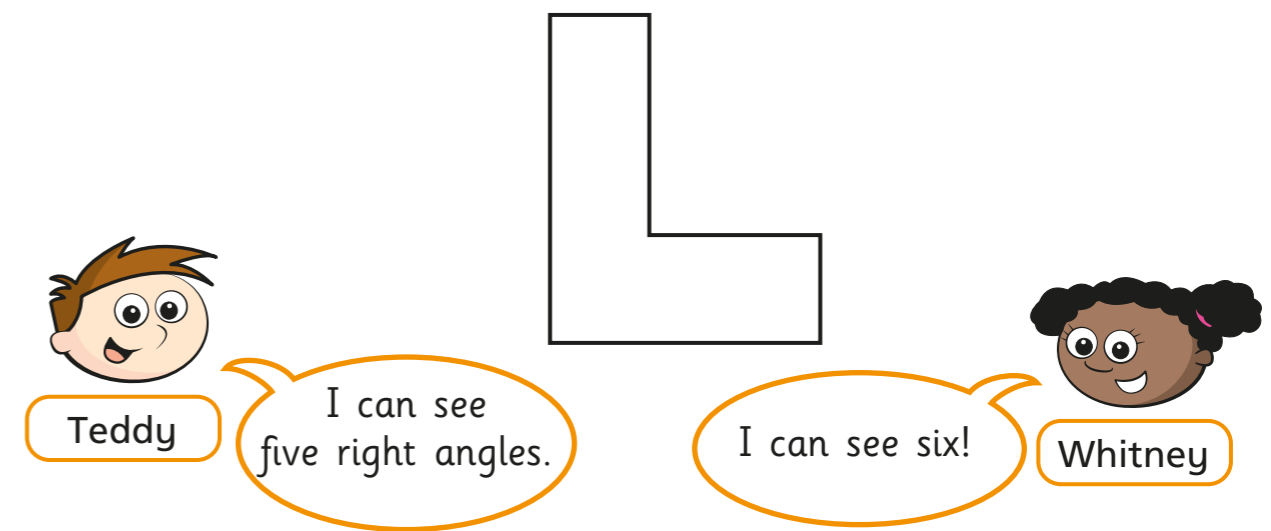
Sort the shapes into the table.



0 right angles	1 right angle	2 right angles	3 right angles	4 right angles



8 Teddy and Whitney are identifying right angles.

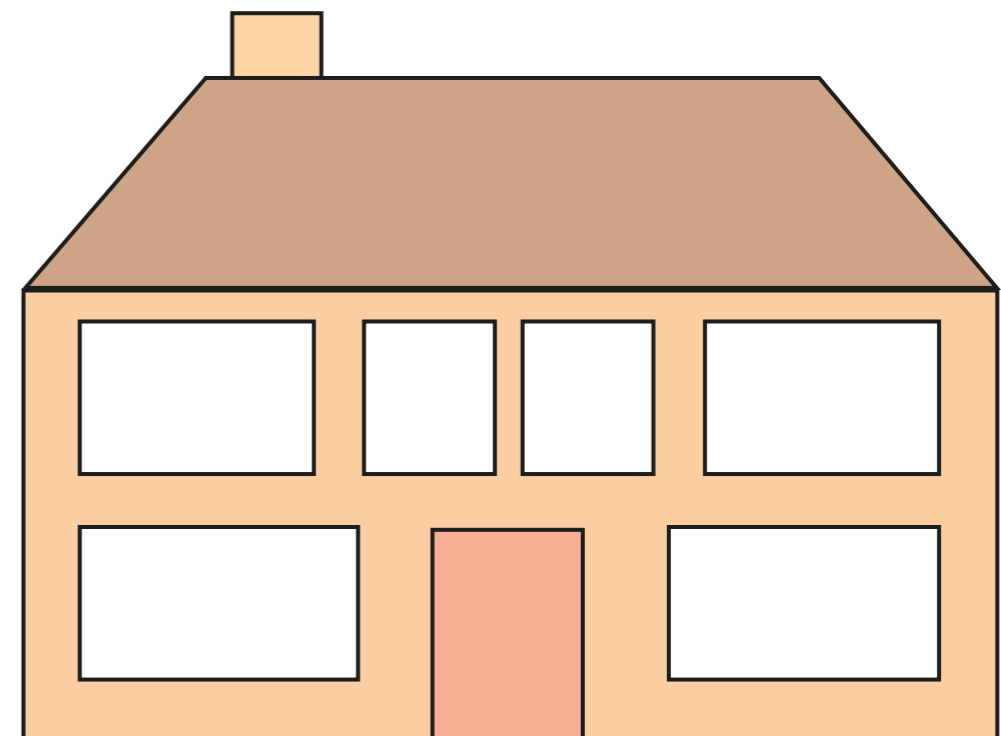


Who do you agree with? _____

Draw on the shape to show your thinking.

9 How many right angles can you find in the picture?

Mark them on the picture.



Create your own problem like this for a partner.

