

The Rainforest

Learning Objective:

To be able to locate rainforests on a world map.



What do you already know about rainforests?



What do you think rainforests are like?

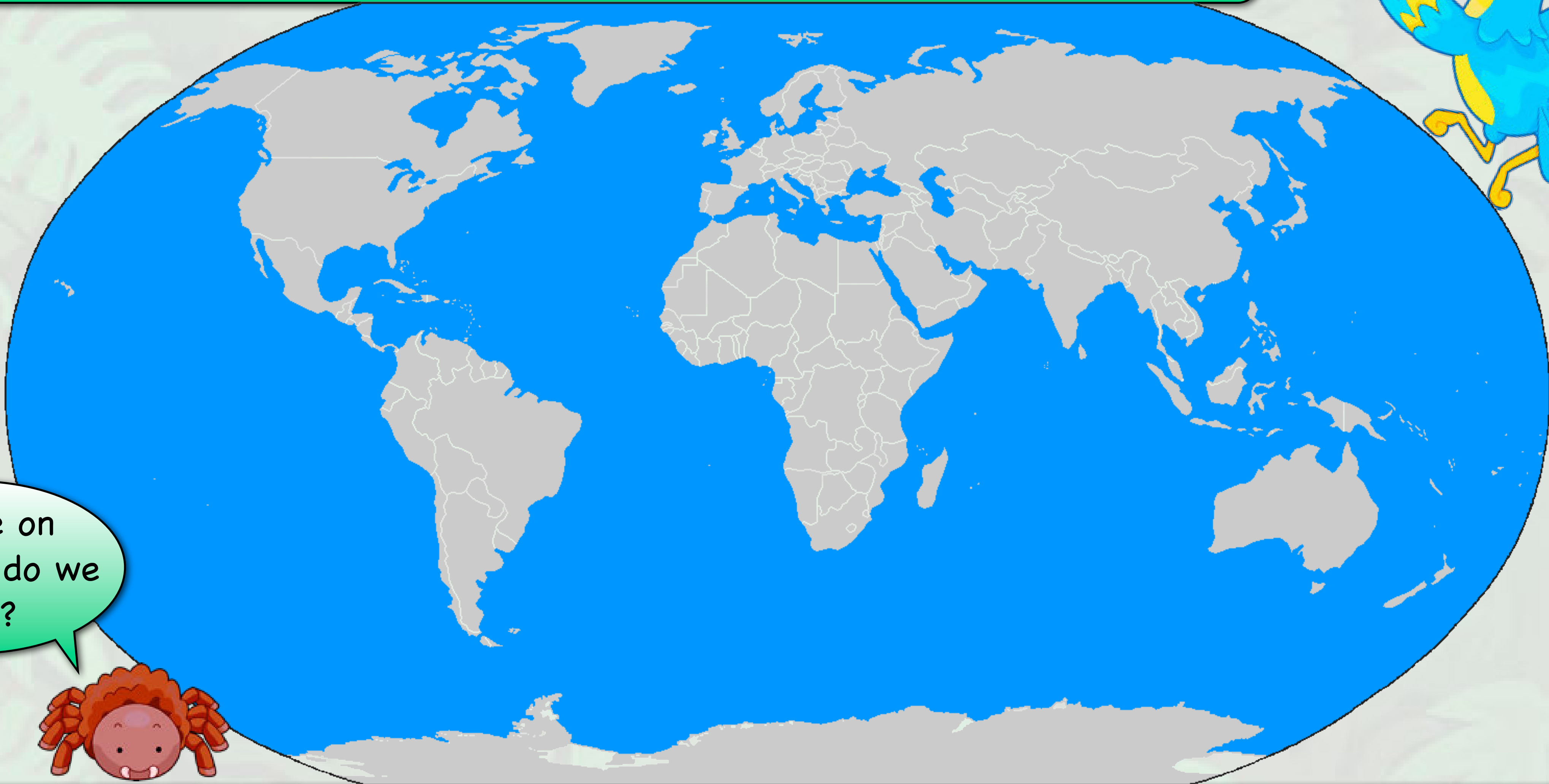


Think, pair, share your ideas.

Rainforests are very dense, hot forests. They are called 'rainforests' because of the high level of rainfall they get every year.



Where do you think rainforests are on this map of the world?



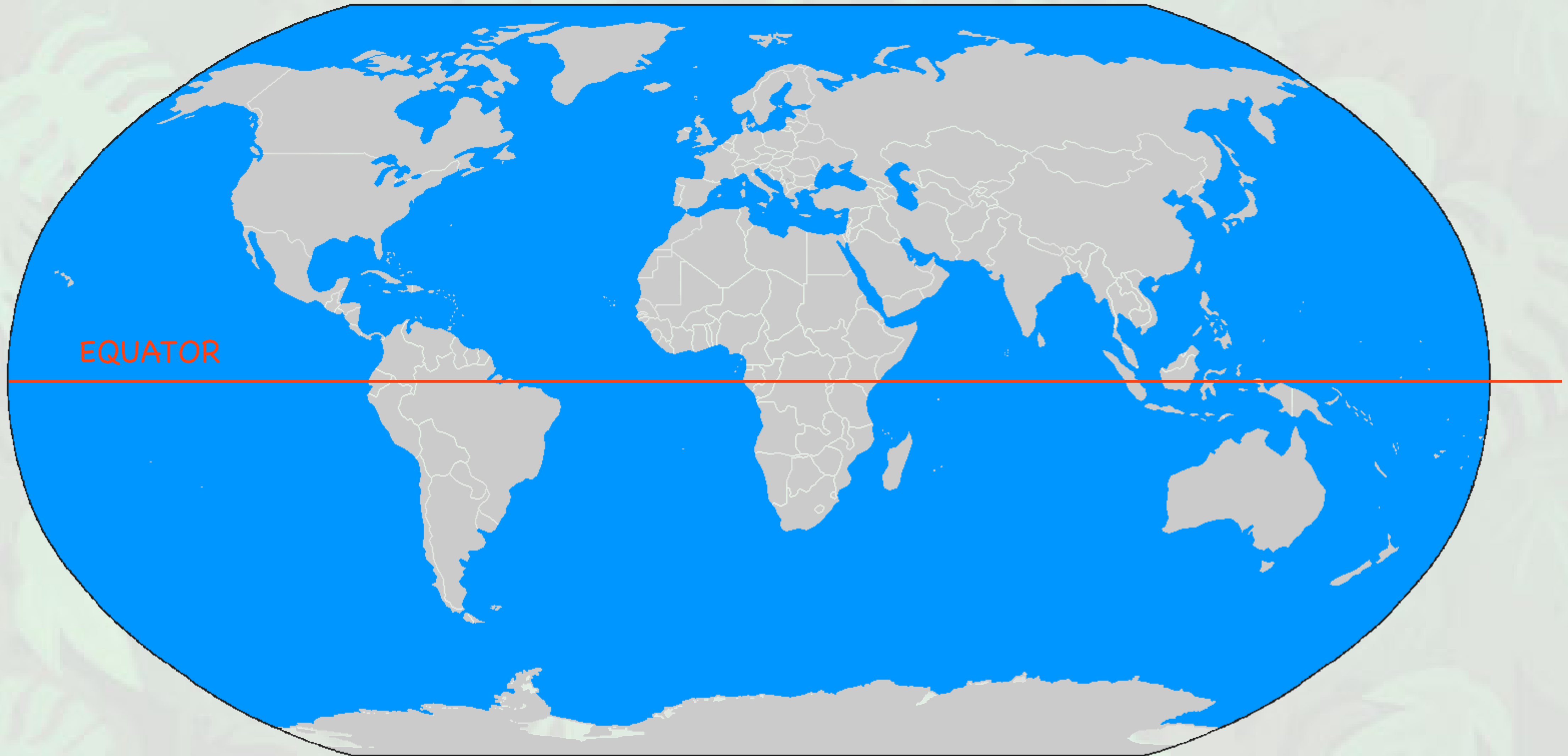
Where on this map do we live?



BACK

NEXT

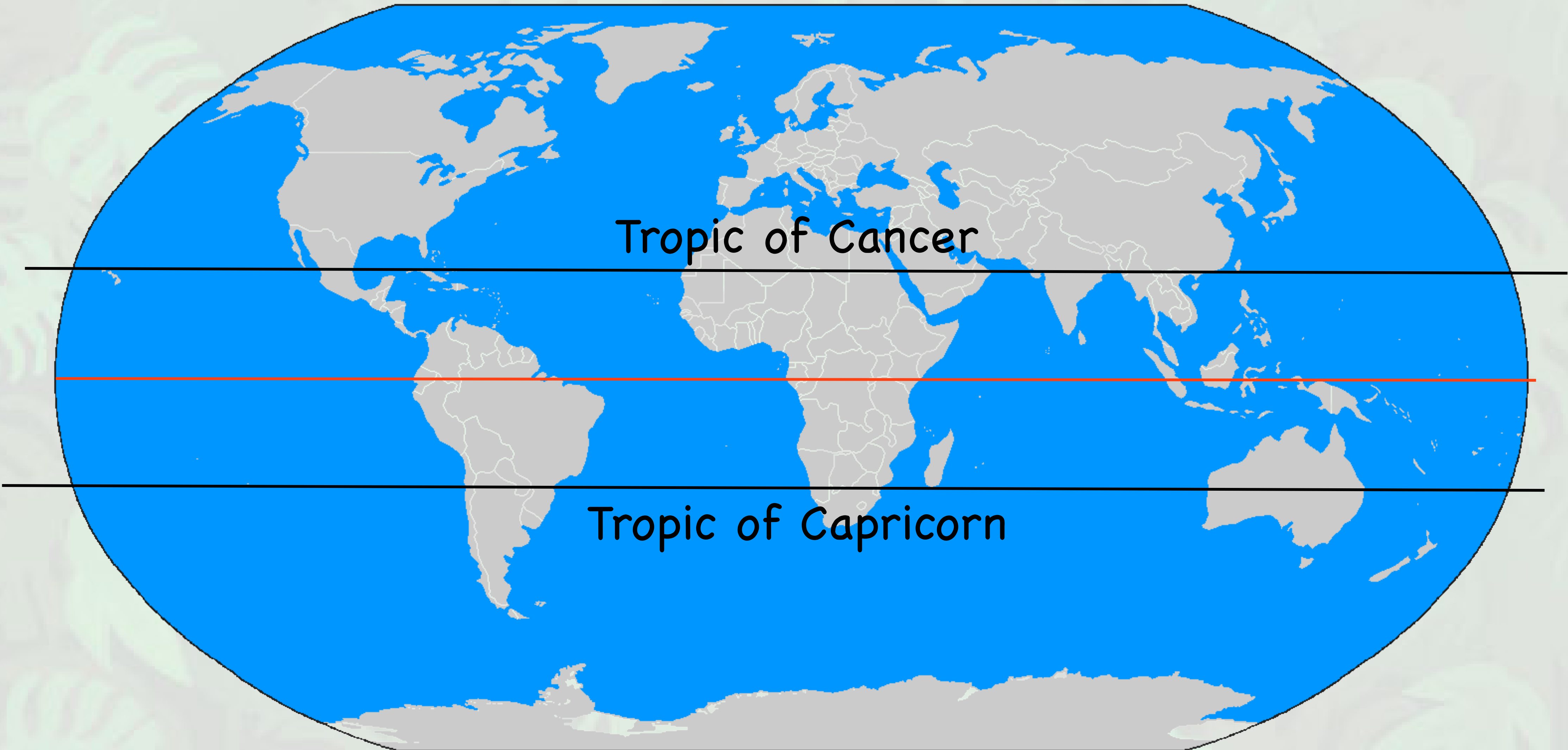
The world has an imaginary line drawn around its middle. This is called the **EQUATOR**.



◀ **BACK**

NEXT ▶

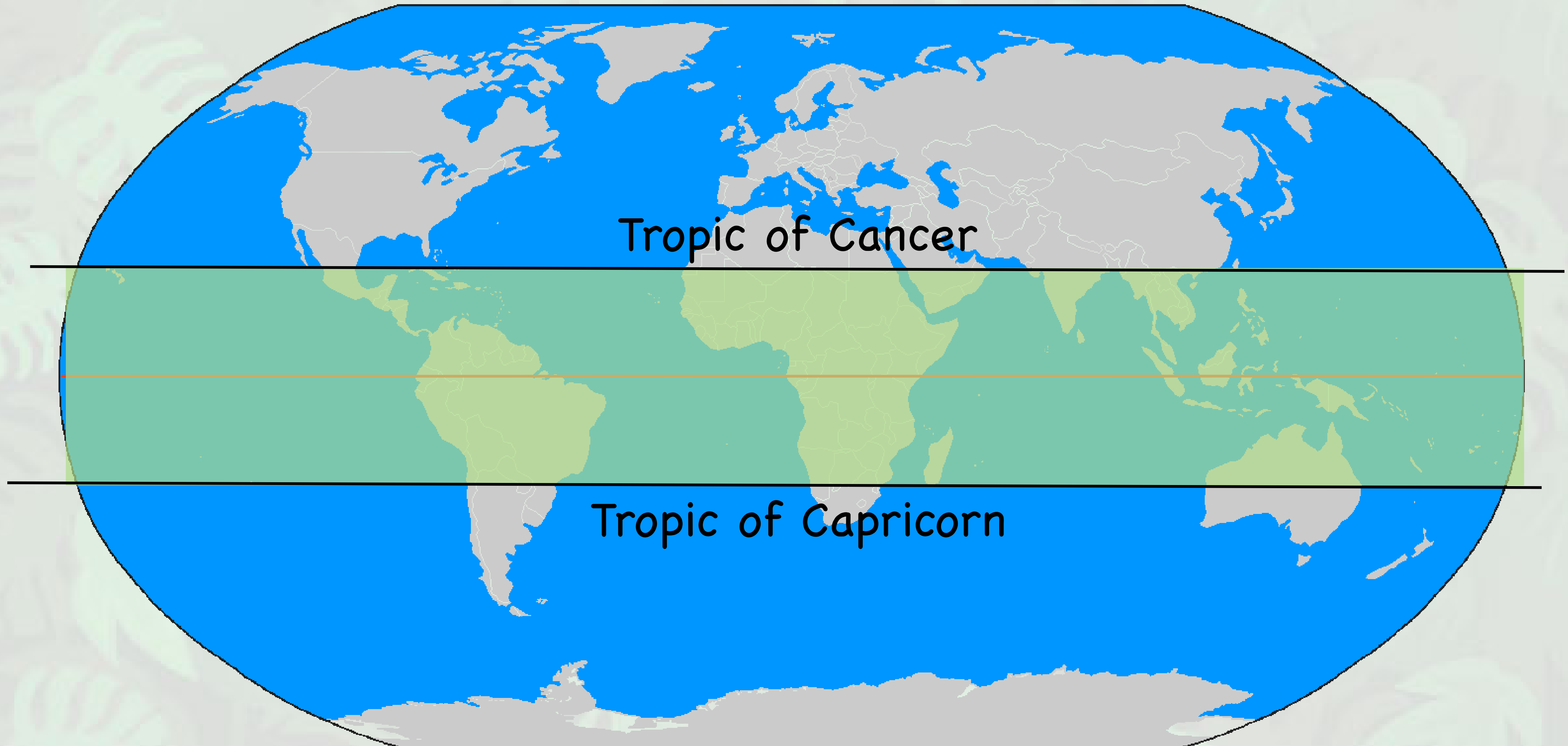
Above the equator is another line called the **TROPIC OF CANCER** and below it is the **TROPIC OF CAPRICORN**.



BACK

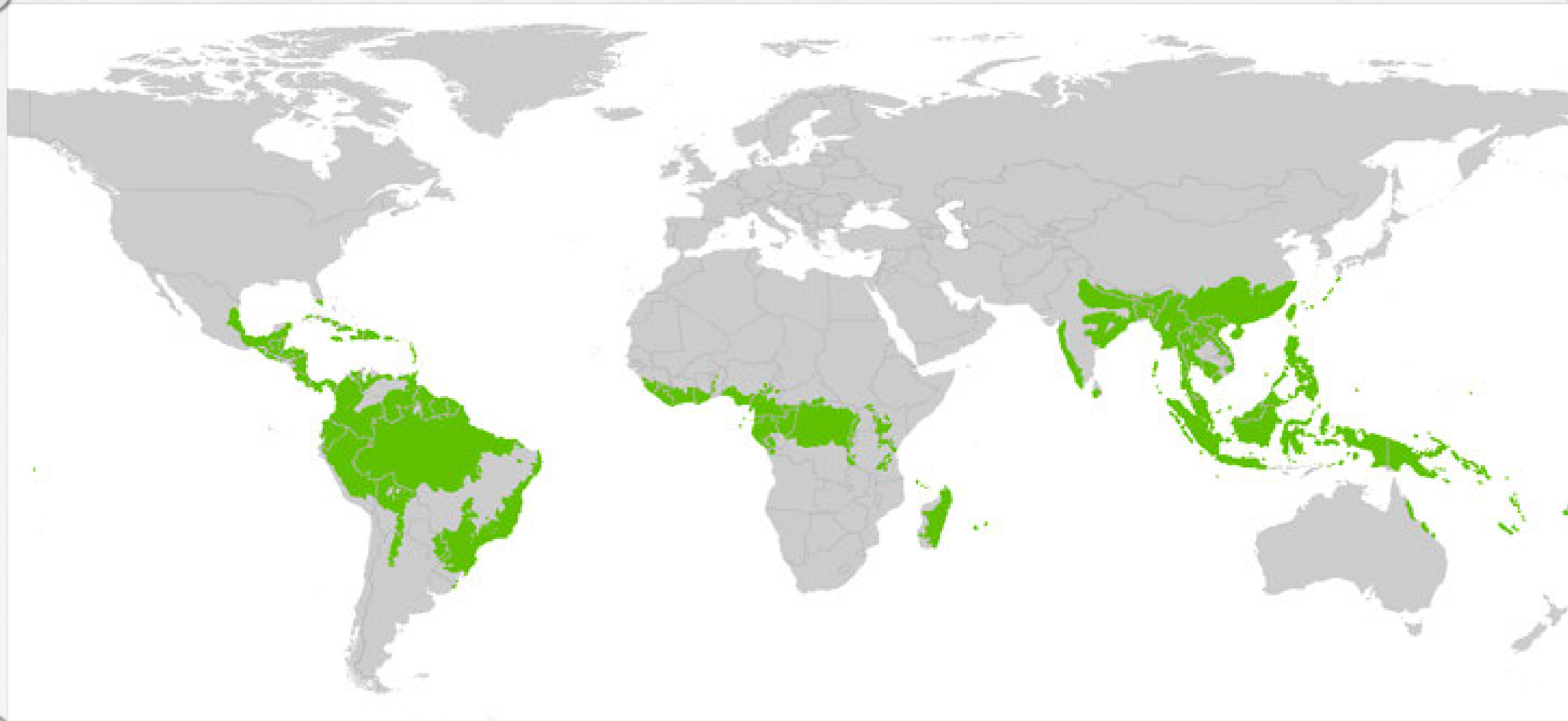
NEXT

Most of the world's rainforests are between the two tropics. These are known as the tropical rainforests.



BACK

NEXT



The sections in green on this world map show you where the tropical rainforests of the world are.

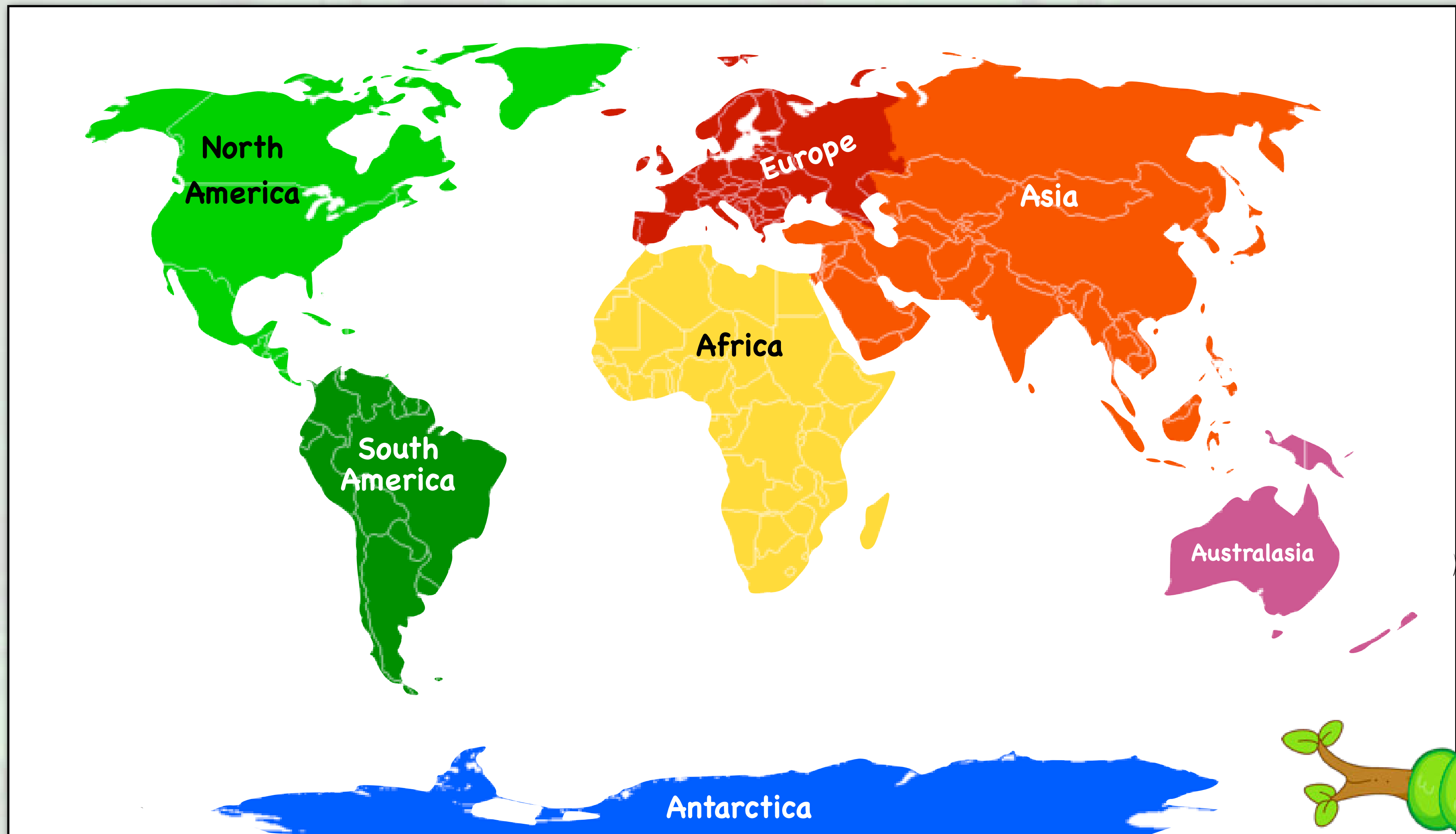


Do you know what a **CONTINENT** is? Can you name any continents?

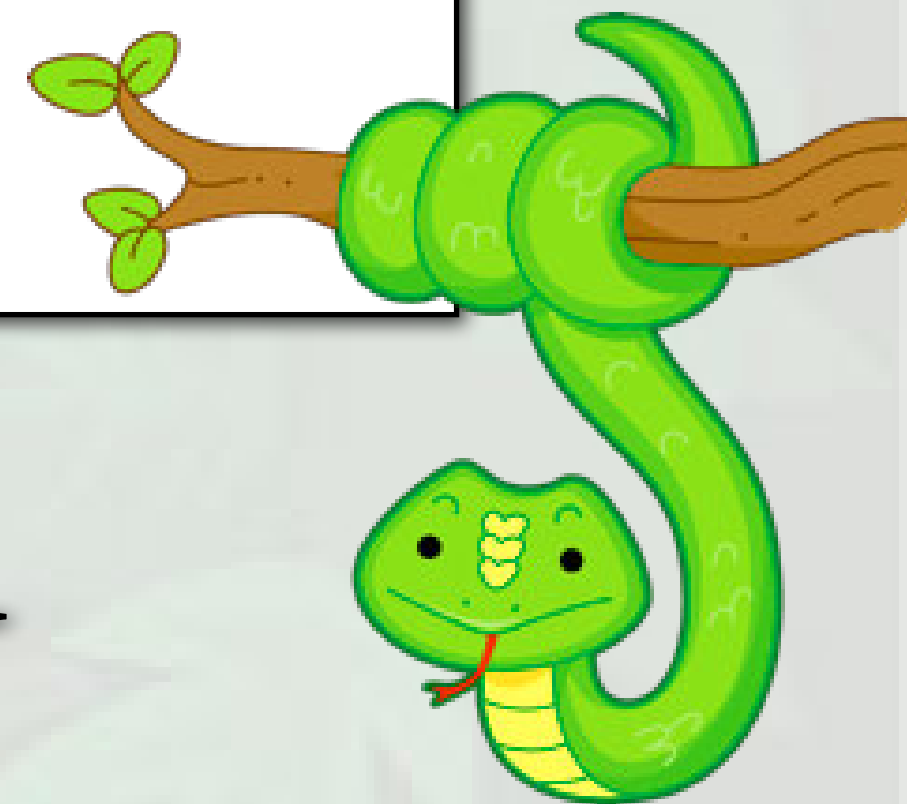
BACK

NEXT

The world is split up into 7 sections called continents.

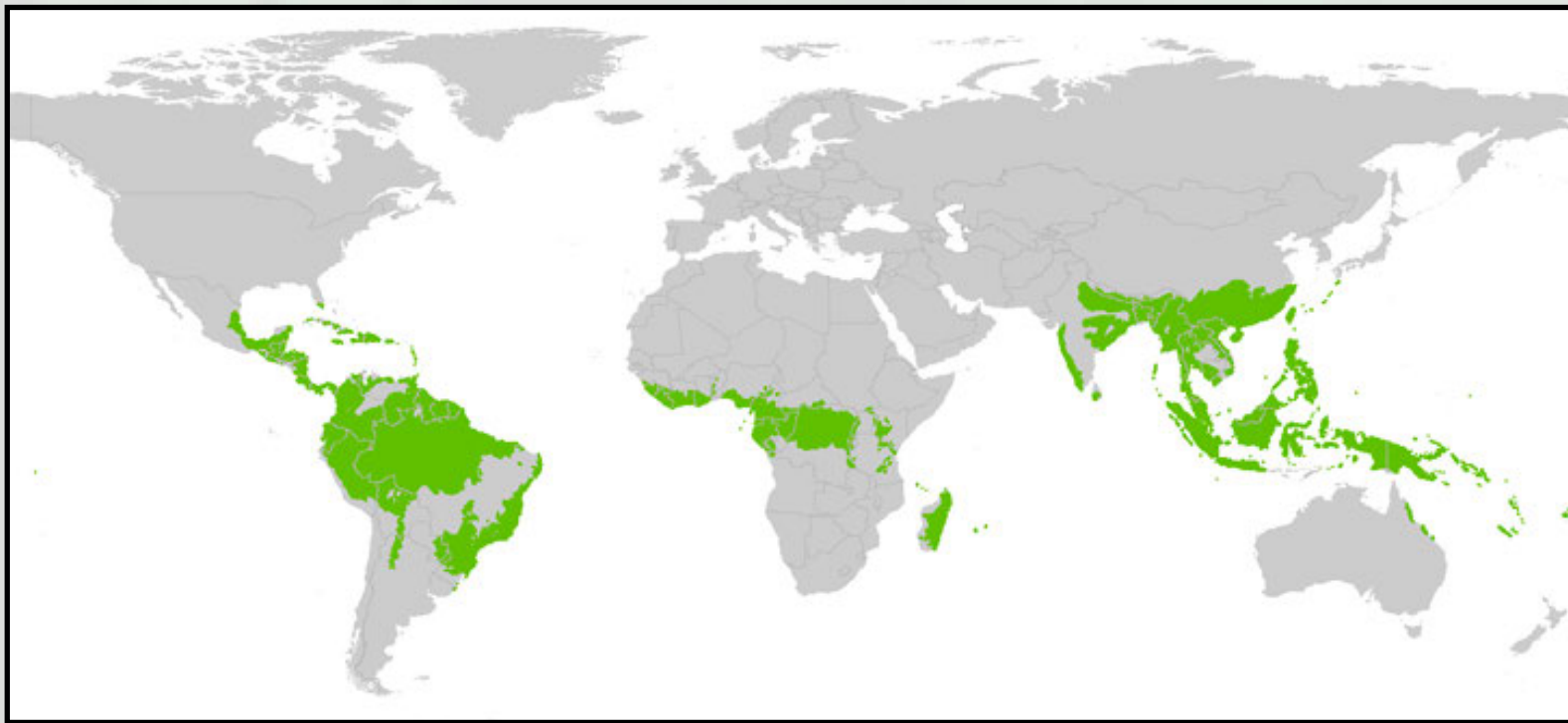


Can you name the continents that have areas of rainforest in them?

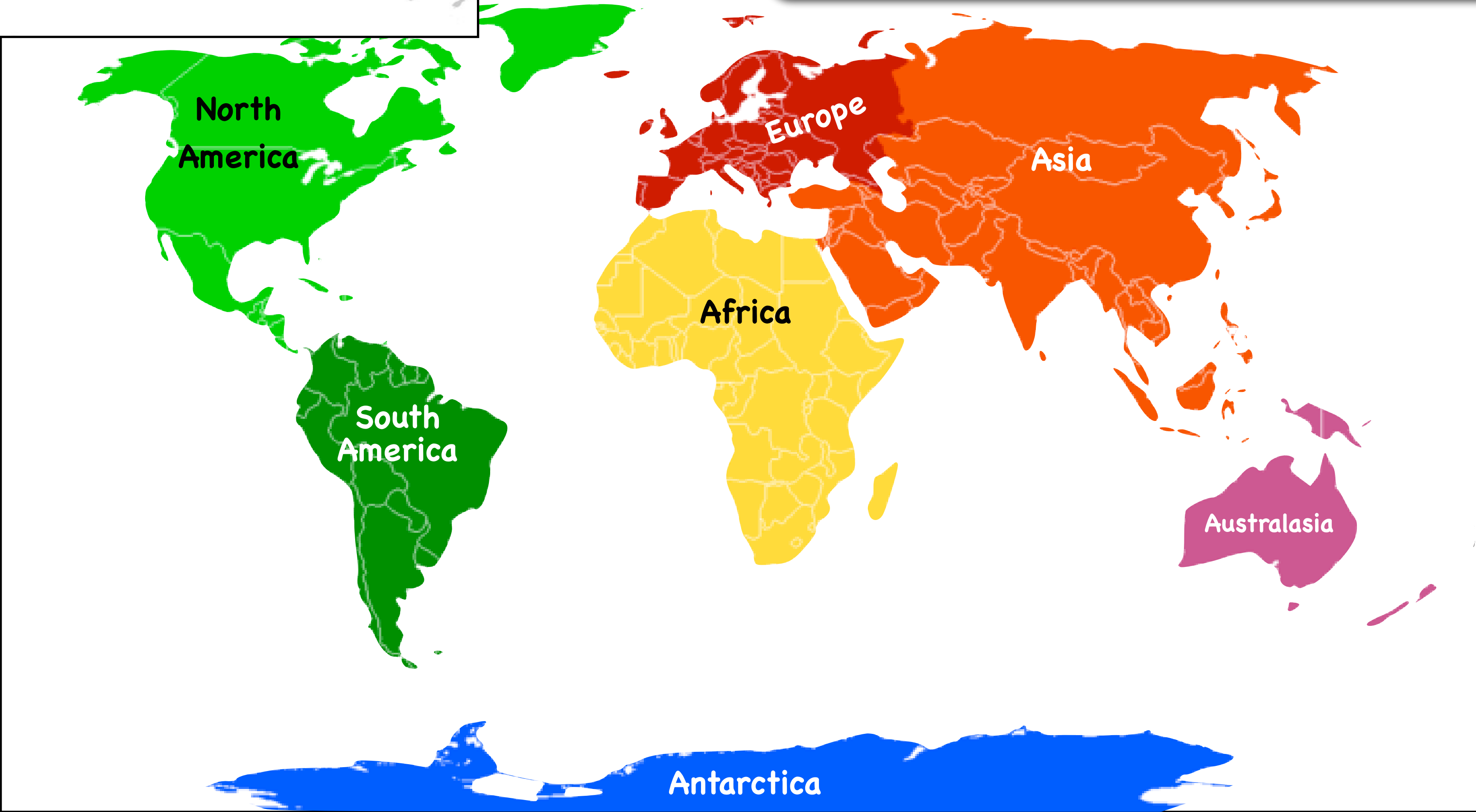


BACK

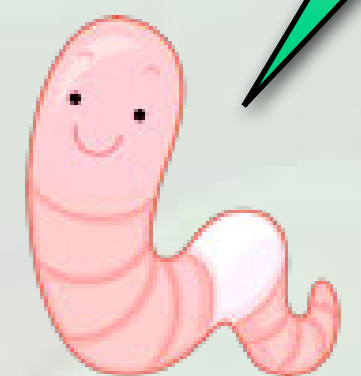
NEXT



Most rainforests are in South America, Africa and Asia.



Did you get those right?



BACK

NEXT

Well done! Now it's time to go and find out which countries have areas of rainforest in them!





BACK

NEXT

